

ESD CARDIGANS, Full Zipper, 2 Straight Pockets with zipper



FEATURES

- Warm dissipative ESD (Electrostatic Discharge) for employees to wear in Electrostatic Protected Areas (EPA). Comfortable wearing and Ideal for environments where electrostatic resistance is necessary to protect the wearer.
- Composition: 48% Polyester; 48% Cotton, 4% Conductive Fibers
 - Material Weight: 320 g/m²
 - Vetical Terry knit
 - Static Dissipative Carbon Loaded yarn in 10mmX1 stripe
 - Long sleeves with ESD elastic cuffs and a round neck
 - 2 pockets / 3 pockets
 - ESD symbol on left arm
 - Unisex Sizes: XS -6XL (Others Available on request)
 - Custom on request for adding logos and staff names



ELECTRICAL PROPERTIES

- Resistivity point-point (Rp): 10⁶ - 10⁷ Ohms (Both sides)
- Decay time: < 2 second
- Conforms to current ESD Standards IEC61340-5-1 & ANSI/ESD S20.20

WASHING INSTRUCTIONS

- EN 61340-5-1 Electrical properties maintained after more than 50 industrial launderings
- Wash at maximum 40°C
 - Ironing at maimum 110°C
 - Do not use acid or alkali
 - Do not bleach
 - Tumble ary at low temperature



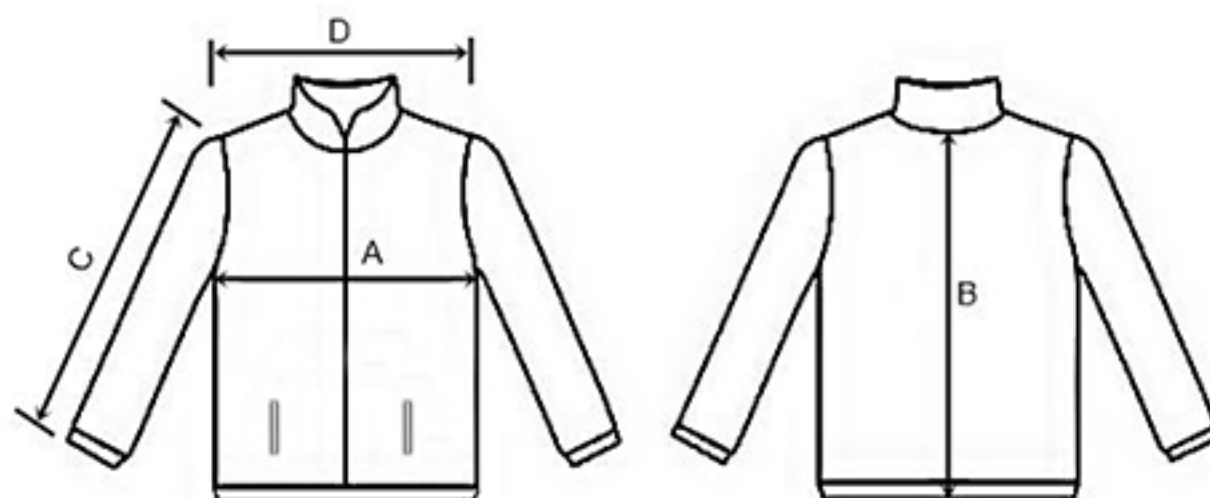
PRODUCT CODES

| PRODUCT CODE | DESCRIPTION | SIZE | QUANTITY |
|--------------|--|--------|----------|
| 0701-00-01 | ESD CARDIGANS,Full Zipper, 2 Straight Pockets with zipper Black | XS-6XL | Each |
| 0701-00-02 | ESD CARDIGANS,Full Zipper, 2 Straight Pockets with zipper Navy Blue | XS-6XL | Each |
| 0701-00-03 | ESD CARDIGANS,Full Zipper, 2 Straight Pockets with zipper Royal Blue | XS-6XL | Each |
| 0701-00-04 | ESD CARDIGANS,Full Zipper, 2 Straight Pockets with zipper Grey | XS-6XL | Each |

COLORS



Size chart(cm)



ESD CARDIGANS, Full Zipper, 2 Straight Pockets with zipper

| SIZE | | Tolerances | XS | S | M | L | XL | 2XL | 3XL | 4XL | 5XL | 6XL |
|------|-------------|------------|----|------|----|------|------|------|-----|------|------|------|
| A | 1/2 CHEST | ±2 | 50 | 52.5 | 55 | 57.5 | 59.5 | 63.5 | 67 | 69.5 | 72.5 | 75.5 |
| B | BACK LENGTH | ±2 | 67 | 68.5 | 70 | 71.5 | 73 | 74.5 | 76 | 78.5 | 80 | 81,5 |
| C | SLEEVE | ±2 | 62 | 63 | 64 | 65 | 66 | 67 | 68 | 69 | 70 | 71 |
| D | SHOULDER | ±2 | 47 | 48 | 50 | 51 | 53 | 54 | 56 | 57 | 58 | 60 |

- A Armpit to armpit
- B Bottom of collar to bottom of belt
- C Shoulder seam to bottom of cuff
- D Shoulder seam to shoulder seam