

ESD Sweatshirt Round Neck,Unisex



FEATURES

Our unisex long sleeve ESD Sweatshirts are made from a static dissipative material featuring an ESD logo on the arm. Can be worn in an EPA and ideal for use in colder environments.

- Composition: 48% Polyester; 48% Cotton, 4% Conductive Fibers
- Material Weight: 300 g/m²
- Slatic Dissipative Carbon Loaded yarn in 10mmX2 stripe
- Long sleeves
- ESD elastic cuffs
- Round neck
- ESD symbol on left arm
- Unisex Sizes: XS - 6XL (Others Available on request)
- Custom on request for adding logos and staff names



LinkedIn



WhatsApp

COLORS



Black



Navy Blue



Royal Blue



Grey



UNISEX
STYLE



TAPED NECKLINE
FOR COMFORT



TRIPLE STITCHED
SEAMS WITH
LIFETIME WARRANTY



ESD
KNIT CUFF

ELECTRICAL PROPERTIES

- Resistivity point-point (Rp): 10⁶ - 10⁷ Ohms (Both sides)
- Decay time: < 2 second
- Conforms to current ESD Standards IEC61340-5-1 & ANSI/ESD S20.20

WASHING INSTRUCTIONS

EN 61340-5-1 Electrical properties maintained after more than 50 industrial launderings

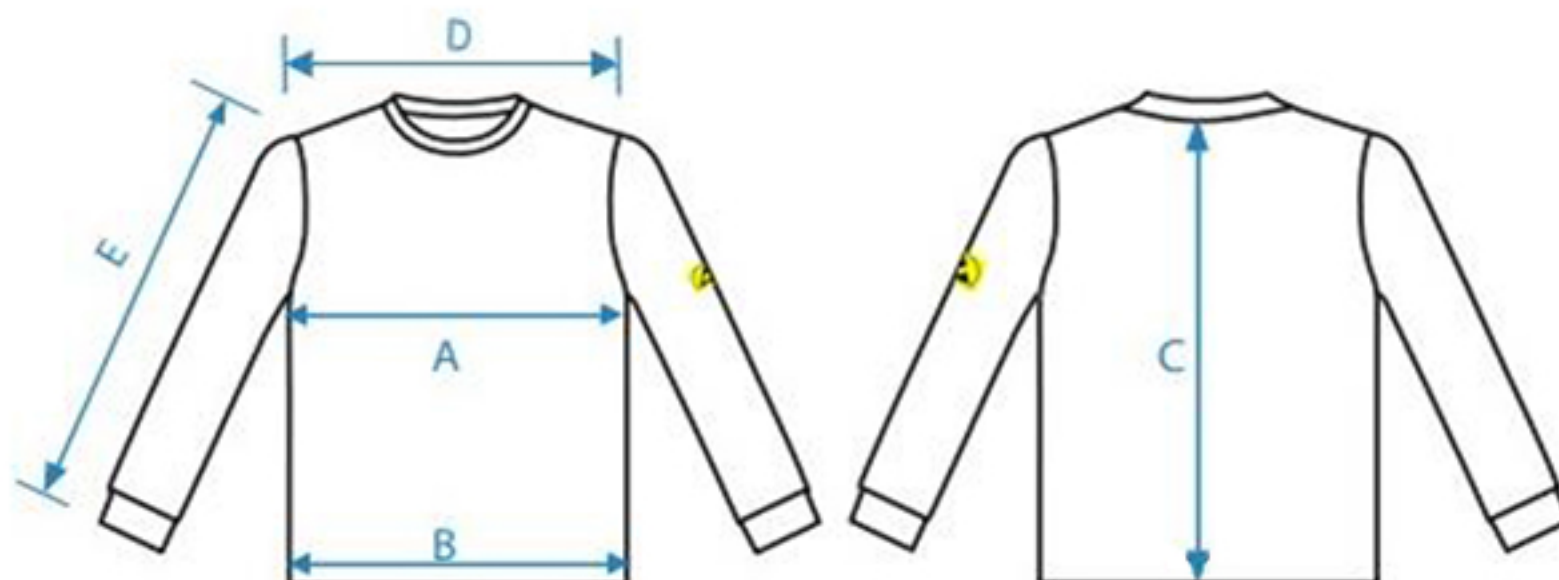
- Wash at maximum 40°C
- Ironing at maimum 110°C
- Do not use acid or alkali
- Do not bleach
- Tumble ary at low temperature



PRODUCT CODES

PRODUCT CODE	DESCRIPTION	SIZE	QUANTITY
0801-00-01	ESD Sweatshirt Round Neck,Unisex Black	XS-6XL	Each
0801-00-02	ESD Sweatshirt Round Neck,Unisex Navy Blue	XS-6XL	Each
0801-00-03	ESD Sweatshirt Round Neck,Unisex Royal Blue	XS-6XL	Each
0801-00-04	ESD Sweatshirt Round Neck,Unisex Grey	XS-6XL	Each

Size chart(cm)



ESD Sweatshirt Round Neck, Unisex

	SIZE	Tolerances	XS	S	M	L	XL	XXL	3XL	4XL	5XL	6XL
A	1/2 CHEST	±2	47	49,5	52	54,5	57	59,5	62	64,5	67	69,5
B	1/2 BOTTOM	±2	47	49,5	52	54,5	57	59,5	62	64,5	67	69,5
C	BACK LENGTH	±2	62,5	64	65,5	67	68,5	70	71,5	73	74,5	76
D	SHOULDER	±2	45,5	47	48,5	50	51,5	53	54,5	56	57,5	59
E	SLEEVE	±2	58,5	59,5	60,5	61,5	62,5	63,5	64,5	65,5	66,5	67,5

- A Armpit to armpit
- B Bottom of side seam to side seam
- C Bottom of collar to bottom of belt
- D Shoulder seam to bottom of cuff
- E Shoulder seam to shoulder seam